

HDMI KVM Extender 150m

— Manual —



HDMI KVM Extender 150m

I. Product overview

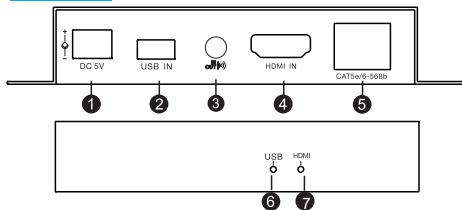
Welcome to use our high quality video conversion products! This HD extender consists of a transmitter and receiver. Transmission of audio and video in shallow compression mode. Signal, and there is no need to convert the signal to digital/mode or mode/number before transmission. The remote image restoration effect is clear and natural after the extension of super five and six types of network cable Significant attenuation. The product is widely used in computer teaching system, high quality multimedia display, video conference Discussion, computer, digital home theater, exhibition, education, finance, scientific research, meteorology and other fields.

II. Product specification

1. The HDMI signals can be transmitted up to 150m via cat5 cable; (Network cable requirements: please use the recommended brand network cable: HISIVISON, DAHUA, Cat5/6 engineering with shielded network cable),
2. Support resolution up to 1080p@60hz, downward compatibility,
3. Built-in automatic equalization system, smooth, clear and stable picture.
4. Built-in ESD electrostatic protection circuit, comprehensive protection system safety,
5. With kvm function, support USB1.1 keyboard and mouse remote operation

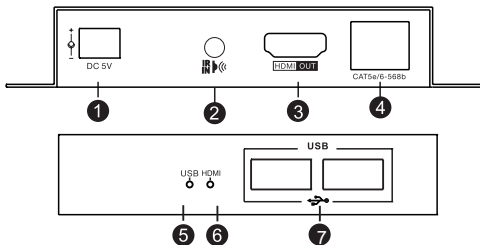
III .interface description


Sender.TX



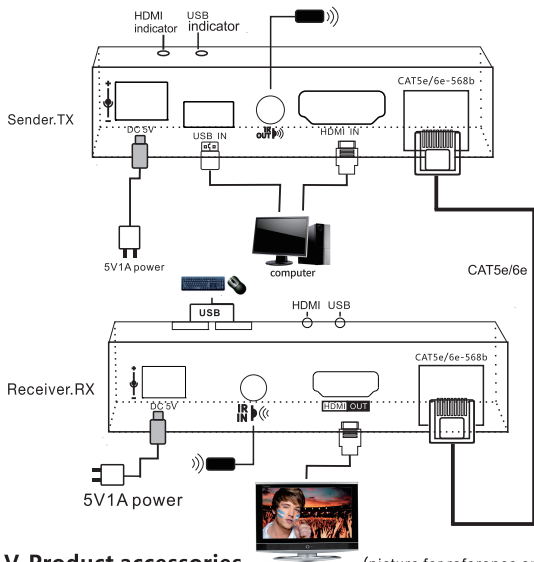
S.N.	Name	Introduction
①	DC 5V	The port of 5V1A power input
②	USB IN	The port of USB input
③	IR OUT	Infrared output
④	HDMI IN	The port of HDMI input
⑤	CAT5e/6e-568b	Internet port
⑥	USB	USB indicator
⑦	HDMI	HDMI indicator

Receiver.RX



S.N.	Name	Introduction
①	DC 5V	The port of 5V1A power input
②	HDMI OUT	The port of HDMI input
③	IR IN	Infrared reception
④	CAT5e/6e-568b	Internet port
⑤	USB	USB indicator
⑥	HDMI	HDMI indicator
⑦	USB 	USB1.1 port only for keyboard&mouse

IV. Connection diagram



V. Product accessories

- 1、Transmitter*1pcs
- 2、Receiver*1pcs
- 3、5V / 1A power adapter*2pcs
- 4、USB cable*1pcs

Note: When unpacking, please check your accessories. If the parts are incomplete, please consult your supplier.
(Please use our company's power supply. If other power supply causes product damage, it is not covered by warranty.)

Product Warranty Card

Customer Information

Model:	
Date of purchase:	
User telephone:	
User address:	
Distributor:	
Agency address:	
User telephone:	Dealer stamp valid

Intenance Records

Repair times	Date	Fault	Treatment measures	Repair work NO.